



Quickstart Guide USB-IR Dongle

Integrating Mixed-Signal Solutions

USB-IR Dongle

Windows 2000/ME/98/98SE Software Installation and Operations

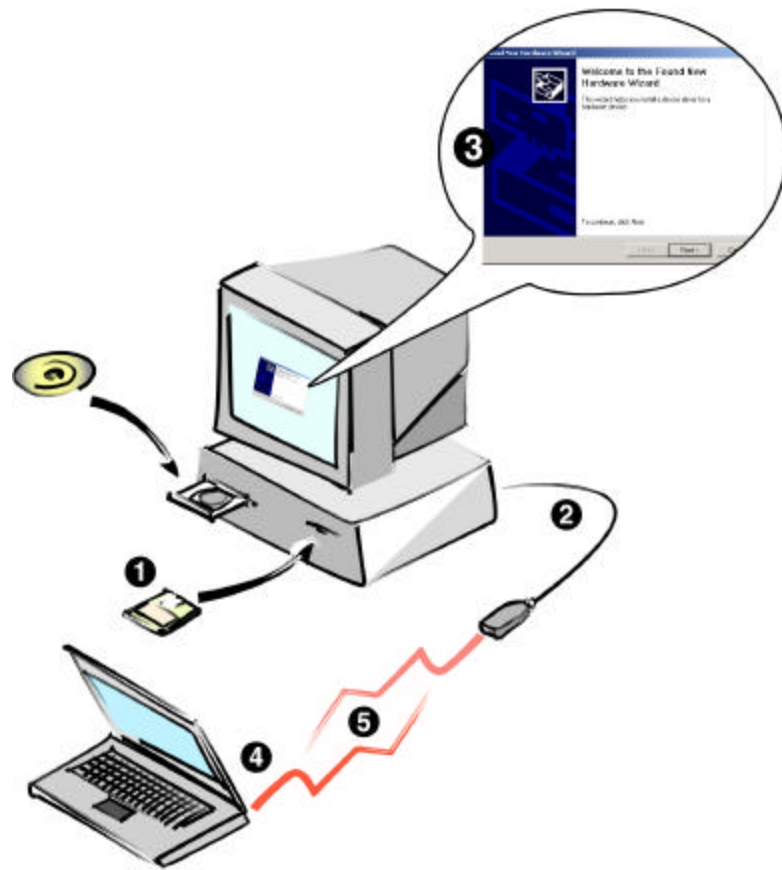
Release 1.21

This document provides instructions to install the USB-IR Dongle along with the Windows 2000/ME/98/98SE USB-IR device driver. It is assumed that the user is familiar with basic operation of Windows 2000/ME/98/98SE.

1 QUICK START – WINDOWS 2000

1. Copy the SigmaTel USB-IR drivers for Windows 2000 to a floppy disk.
2. Plug the USB-IR Dongle into an available USB port on the desktop computer.
3. Follow the installation wizard instructions to install the device using the drivers on the floppy disk.
4. Make sure the other computer (for example, a notebook) has its IR port activated. Align the Dongle and the notebook. The computers will “discover” each other.
5. To send files, double-click the **IR icon** in the system tray.

To receive files, click the **Wireless Link** icon on the desktop to set a default folder, then send from the notebook.

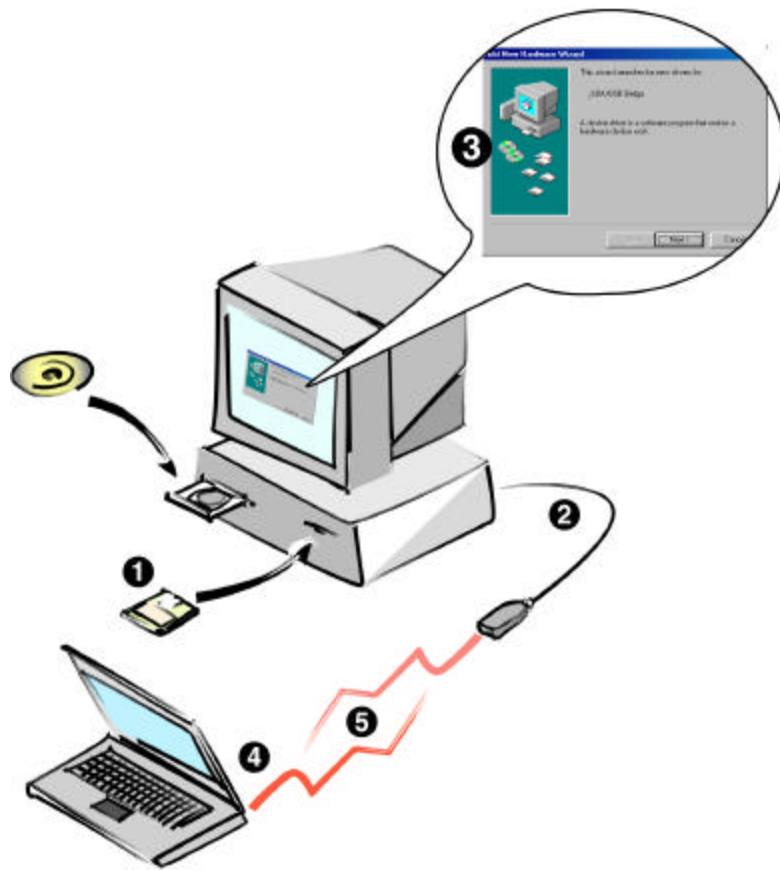


2 QUICK START – WINDOWS ME

1. Copy the driver files to a floppy disk.
2. Plug the USB-IR Dongle into an available USB port on the desktop computer.
3. Follow the installation wizard instructions to install the device using the drivers on the floppy disk.
4. Enable the IR ports on both computers by double-clicking on the IR icon in the system tray. Under the Options tab, check Enable infrared communication.
5. Align the Dongle and the notebook so the computers will “discover” each other.

To send files, from the desktop go to **My Computer>>Infrared Recipient**.

To receive files, follow the instructions that appear when the computer receives the transmission.



3 QUICK START – WINDOWS 98/98SE

1. Copy the SigmaTel USB-IR drivers for Windows 98/98SE to a floppy disk.
2. Plug the USB-IR Dongle into an available USB port on the desktop computer.
3. Follow the installation wizard instructions to install the device using the drivers on the floppy disk.
4. Enable the IR ports on both computers by double-clicking on the IR icon in the system tray. Under the Options tab, check Enable infrared communication.
5. Align the Dongle and the notebook so the computers will “discover” each other.

To send files, from the desktop go to **My Computer>>Infrared Recipient**.

To receive files, follow the instructions that appear when the computer receives the transmission.

